

\$1,150,000 - 14610 115 Avenue, Edmonton

MLS® #E4431251

\$1,150,000

0 Bedroom, 0.00 Bathroom,
Industrial on 0.00 Acres

Huff Bremner Estate Industrial, Edmonton, AB

5,615 SF +/- industrial condominium with fenced yard available for an owner/user! Front buildout features many windows, one office and one boardroom with the balance as showroom or open work area as well as a kitchenette. Double bay warehouse with sump and 16' overhead door. The wood storage mezzanine can remain or be removed. There is approximately 3,750 SF of fenced and gated yard in the rear. This location has great access to 149 Street and Yellowhead Trail.

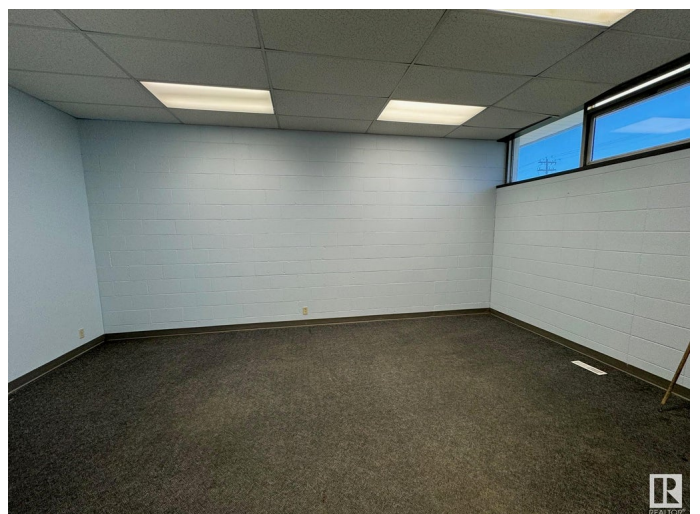
Built in 1964

Essential Information

MLS® #	E4431251
Price	\$1,150,000
Bathrooms	0.00
Acres	0.00
Year Built	1964
Type	Industrial
Status	Active

Community Information

Address	14610 115 Avenue
Area	Edmonton
Subdivision	Huff Bremner Estate Industrial
City	Edmonton
County	ALBERTA



Province AB
Postal Code T5M 3B9

Exterior

Exterior Block
Construction Block

Additional Information

Date Listed April 14th, 2025
Days on Market 14
Zoning Zone 40

DATA IS DEEMED RELIABLE BUT IS NOT GUARANTEED ACCURATE BY THE REALTORS® ASSOCIATION OF EDMONTON. COPYRIGHT 2025 BY THE REALTORS® ASSOCIATION OF EDMONTON. ALL RIGHTS RESERVED. Trademarks are owned or controlled by the Canadian Real Estate Association (CREA) and identify real estate professionals who are members of CREA (REALTOR®, REALTORS®) and/or the quality of services they provide (MLS®, Multiple Listing Service®)

Listing information last updated on April 28th, 2025 at 4:02am MDT