

\$5,995,000 - 112 Westbrook Drive, Edmonton

MLS® #E4434667

\$5,995,000

2 Bedroom, 2.50 Bathroom, 2,944 sqft

Single Family on 0.00 Acres

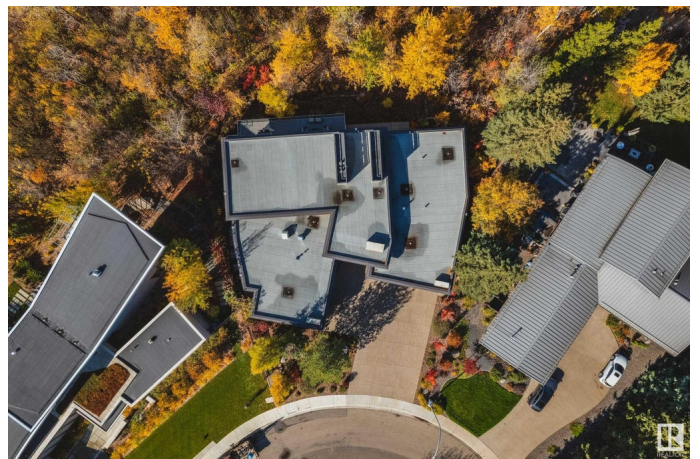
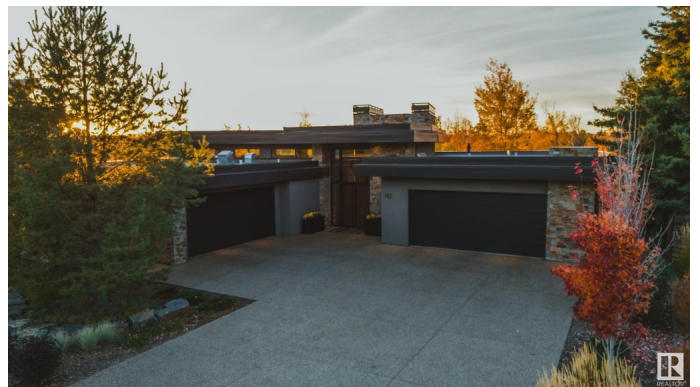
Westbrook Estate, Edmonton, AB

Panoramic RIVER VALLEY views â€“ backing onto Whitemud Creek Ravine â€“ full unobstructed view! The attention to detail provides the perfect fusion between structural strength & architectural form â€“ Urbis Architecture, Mitchell Freedland Design/Vancouver! This home seamlessly blends indoor/outdoor spaces capturing all elements of luxury â€“ Flawless design covers every inch of this stunning home well-appointed & sophistication throughout. The home encompasses just over 5897 SQFT of developed living space with walkout basement â€“ luxury bedrooms, Gym, Art Room, Office, 2.5 bathrooms, 15ft ceilings â€“ North & South Garages - Quad attached garage (extra height for car lifts) â€“ the entire back of the home is floor to ceiling windows. Every finish was hand selected for a luxurious feel - custom millwork & cabinetry, superior lighting & plumbing fixtures - the craftsmanship is like no other fit & finish you have never seen before â€“ West Coast Luxury in YEG - boasting every state-of-the-art finish.

Built in 2013

Essential Information

MLS® #	E4434667
Price	\$5,995,000



Bedrooms	2
Bathrooms	2.50
Full Baths	2
Half Baths	1
Square Footage	2,944
Acres	0.00
Year Built	2013
Type	Single Family
Sub-Type	Detached Single Family
Style	Bungalow
Status	Active

Community Information

Address	112 Westbrook Drive
Area	Edmonton
Subdivision	Westbrook Estate
City	Edmonton
County	ALBERTA
Province	AB
Postal Code	T6J 2E1

Amenities

Amenities	Air Conditioner, Ceiling 10 ft., Closet Organizers, Deck, Detectors Smoke, Exercise Room, Patio, Vaulted Ceiling, Walkout Basement, Wet Bar, See Remarks, Infill Property
Parking Spaces	8
Parking	Heated, Over Sized, Quad or More Attached

Interior

Interior Features	ensuite bathroom
Appliances	Alarm/Security System, Dryer, Freezer, Garage Control, Garage Opener, Oven-Built-In, Refrigerator, Stove-Countertop Gas, Washer, Wine/Beverage Cooler, Dishwasher-Two
Heating	Forced Air-2, In Floor Heat System, Natural Gas
Fireplace	Yes
Fireplaces	Stone Facing
Stories	2
Has Basement	Yes
Basement	Full, Finished

Exterior

Exterior	Wood, Stone, Stucco
Exterior Features	Backs Onto Park/Trees, Cul-De-Sac, Landscaped, Low Maintenance Landscape, Private Setting, Schools, Shopping Nearby, Treed Lot, See Remarks
Roof	Flat
Construction	Wood, Stone, Stucco
Foundation	Concrete Perimeter

School Information

Elementary	Westbrook School
Middle	Vernon Barford School
High	Harry Ainlay School

Additional Information

Date Listed	May 6th, 2025
Days on Market	5
Zoning	Zone 16

DATA IS DEEMED RELIABLE BUT IS NOT GUARANTEED ACCURATE BY THE REALTORS® ASSOCIATION OF EDMONTON. COPYRIGHT 2025 BY THE REALTORS® ASSOCIATION OF EDMONTON. ALL RIGHTS RESERVED.Trademarks are owned or controlled by the Canadian Real Estate Association (CREA) and identify real estate professionals who are members of CREA (REALTOR®, REALTORS®) and/or the quality of services they provide (MLS®, Multiple Listing Service®)

Listing information last updated on May 11th, 2025 at 3:47am MDT