

## \$234,900 - 114 905 Blacklock Way, Edmonton

MLS® #E4441002

**\$234,900**

2 Bedroom, 2.00 Bathroom, 981 sqft

Condo / Townhouse on 0.00 Acres

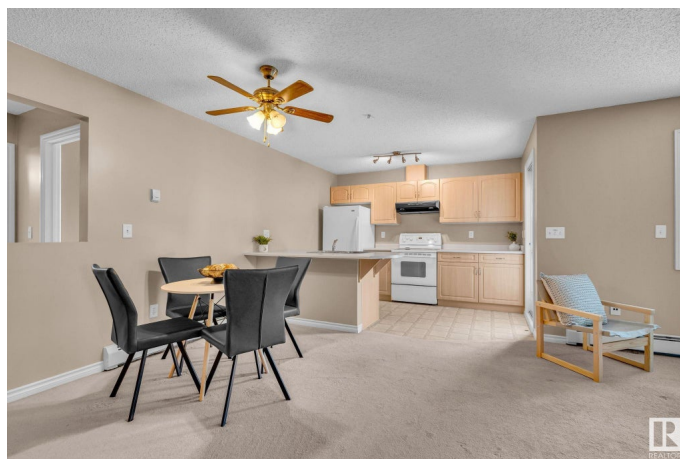
Blackburne, Edmonton, AB

Welcome to your private main-floor oasis! This beautifully maintained two-bedroom, two-bathroom condo backs onto peaceful green spaceâ€”offering the perfect blend of nature and convenience. Step outside and explore nearby walking trails, or simply enjoy the view from your patio with no rear neighbors. Inside, the open-concept layout is both functional and inviting, with spacious bedrooms, a modern kitchen, and plenty of natural light. Tucked away in a quiet, serene setting, yet just minutes from shopping, transit, and all major commuter routes, this location truly offers the best of both worlds. Whether you're a first-time buyer, downsizer, or investor, this is a must-see!

Built in 2003

### Essential Information

MLS® #	E4441002
Price	\$234,900
Bedrooms	2
Bathrooms	2.00
Full Baths	2
Square Footage	981
Acres	0.00
Year Built	2003
Type	Condo / Townhouse



Sub-Type	Lowrise Apartment
Style	Single Level Apartment
Status	Active

### Community Information

Address	114 905 Blacklock Way
Area	Edmonton
Subdivision	Blackburne
City	Edmonton
County	ALBERTA
Province	AB
Postal Code	T6W 1M7

### Amenities

Amenities	Sprinkler System-Fire, Storage Cage
Parking Spaces	1
Parking	Underground

### Interior

Interior Features	ensuite bathroom
Appliances	Dishwasher-Built-In, Dryer, Garburator, Hood Fan, Refrigerator, Stove-Electric, Washer, Window Coverings
Heating	Hot Water, Natural Gas
Fireplace	Yes
Fireplaces	Corner
# of Stories	4
Stories	1
Has Basement	Yes
Basement	None, No Basement

### Exterior

Exterior	Wood, Vinyl
Exterior Features	Airport Nearby, Private Setting, Shopping Nearby
Roof	Asphalt Shingles
Construction	Wood, Vinyl
Foundation	Concrete Perimeter

### Additional Information

Date Listed	June 6th, 2025
-------------	----------------

Days on Market	36
Zoning	Zone 55
Condo Fee	\$528

DATA IS DEEMED RELIABLE BUT IS NOT GUARANTEED ACCURATE BY THE REALTORS® ASSOCIATION OF EDMONTON. COPYRIGHT 2025 BY THE REALTORS® ASSOCIATION OF EDMONTON. ALL RIGHTS RESERVED. Trademarks are owned or controlled by the Canadian Real Estate Association (CREA) and identify real estate professionals who are members of CREA (REALTOR®, REALTORS®) and/or the quality of services they provide (MLS®, Multiple Listing Service®)

Listing information last updated on July 12th, 2025 at 12:48pm MDT