

\$644,500 - 3671 8 Street, Edmonton

MLS® #E4442961

\$644,500

5 Bedroom, 3.00 Bathroom, 2,323 sqft

Single Family on 0.00 Acres

Maple Crest, Edmonton, AB

Amazing location, amazing neighborhood, and an amazing home waiting for a new owner!

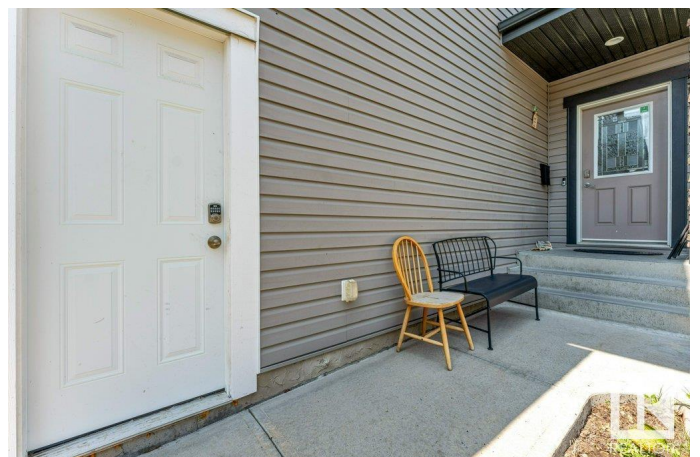
This beautiful 2-storey home in Maple offers 2,322 sq ft of well-designed living space.

Upstairs features 4 spacious bedrooms, a luxurious 5-piece ensuite, a 4-piece main bath, laundry, and a bright bonus room. The main floor boasts a large foyer, a den or 5th bedroom, a stylish 3-piece bath, a cozy great room with a gas fireplace, and a modern kitchen with granite countertops, a large island, pantry, and spacious dining area. The basement is unfinished and ready for your ideas. Park comfortably in the double attached garage and on 5 car Driveway. Located on a quiet cul-de-sac backing onto a walkway and green space, this home offers peace and privacy. A perfect family home in a fantastic location!

Built in 2014

Essential Information

MLS® #	E4442961
Price	\$644,500
Bedrooms	5
Bathrooms	3.00
Full Baths	3
Square Footage	2,323
Acres	0.00



Year Built	2014
Type	Single Family
Sub-Type	Detached Single Family
Style	2 Storey
Status	Active

Community Information

Address	3671 8 Street
Area	Edmonton
Subdivision	Maple Crest
City	Edmonton
County	ALBERTA
Province	AB
Postal Code	T6T 0S4

Amenities

Amenities	Ceiling 9 ft., Deck, Parking-Extra
Parking Spaces	7
Parking	Double Garage Attached

Interior

Interior Features	ensuite bathroom
Appliances	Dishwasher-Built-In, Dryer, Garage Control, Garage Opener, Hood Fan, Refrigerator, Stove-Electric, Washer
Heating	Forced Air-1, Natural Gas
Fireplace	Yes
Fireplaces	Mantel
Stories	2
Has Basement	Yes
Basement	Full, Unfinished

Exterior

Exterior	Wood, Stone, Vinyl
Exterior Features	Backs Onto Park/Trees, Cul-De-Sac, Fenced, Landscaped, Playground Nearby, Public Transportation, Shopping Nearby
Roof	Asphalt Shingles
Construction	Wood, Stone, Vinyl
Foundation	Concrete Perimeter

Additional Information

Date Listed June 18th, 2025

Days on Market 2

Zoning Zone 30

DATA IS DEEMED RELIABLE BUT IS NOT GUARANTEED ACCURATE BY THE REALTORS® ASSOCIATION OF EDMONTON. COPYRIGHT 2025 BY THE REALTORS® ASSOCIATION OF EDMONTON. ALL RIGHTS RESERVED. Trademarks are owned or controlled by the Canadian Real Estate Association (CREA) and identify real estate professionals who are members of CREA (REALTOR®, REALTORS®) and/or the quality of services they provide (MLS®, Multiple Listing Service®)

Listing information last updated on June 20th, 2025 at 3:18pm MDT