

# \$130,000 - 302 2628 Mill Woods, Edmonton

MLS® #E4443046

**\$130,000**

2 Bedroom, 1.00 Bathroom, 877 sqft  
Condo / Townhouse on 0.00 Acres

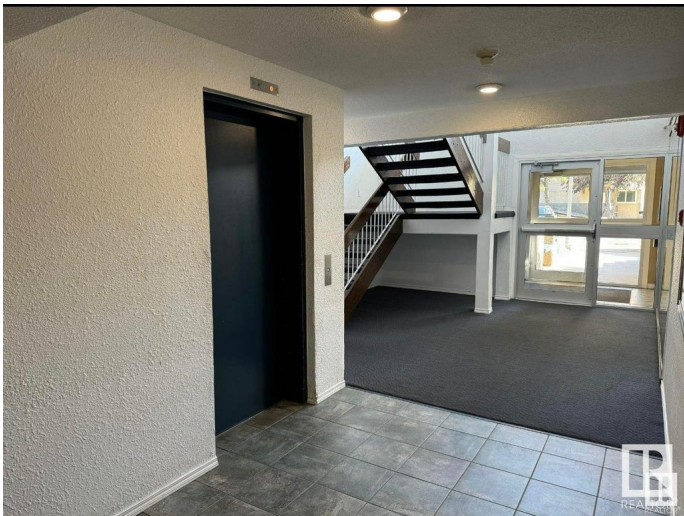
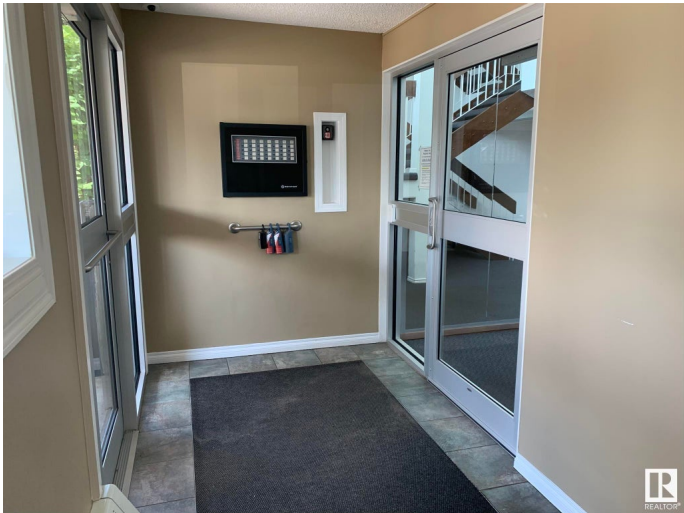
Weinlos, Edmonton, AB

Spacious 2-Bedroom Condo in Prime Millwoods Location! This bright and well maintained third-floor unit at Millwoods Place offers a spacious layout with two large bedrooms, one full bathroom, and a parking stall. Previously renovated, the unit is in great condition and ready for new owners. The building is managed by a reliable property management company. Enjoy a walkable neighborhood with close proximity to banks, shopping plazas, schools, and easy access to Anthony Henday Drive and Whitemud Freeway.

Built in 1981

## Essential Information

MLS® #	E4443046
Price	\$130,000
Bedrooms	2
Bathrooms	1.00
Full Baths	1
Square Footage	877
Acres	0.00
Year Built	1981
Type	Condo / Townhouse
Sub-Type	Lowrise Apartment
Style	Single Level Apartment
Status	Active



## Community Information

Address	302 2628 Mill Woods
Area	Edmonton
Subdivision	Weinlos
City	Edmonton
County	ALBERTA
Province	AB
Postal Code	T6L 5K8

## Amenities

Amenities	Intercom
Parking	Stall

## Interior

Appliances	Refrigerator-Energy Star, Stove-Electric
Heating	Baseboard, Natural Gas, Water
# of Stories	4
Stories	4
Has Basement	Yes
Basement	None, No Basement

## Exterior

Exterior	Wood, Vinyl
Exterior Features	Picnic Area, Playground Nearby, Public Transportation, Schools, Shopping Nearby
Roof	Asphalt Shingles
Construction	Wood, Vinyl
Foundation	Concrete Perimeter

## Additional Information

Date Listed	June 18th, 2025
Days on Market	3
Zoning	Zone 29
Condo Fee	\$510

DATA IS DEEMED RELIABLE BUT IS NOT GUARANTEED ACCURATE BY THE REALTORS® ASSOCIATION OF EDMONTON. COPYRIGHT 2025 BY THE REALTORS® ASSOCIATION OF EDMONTON. ALL RIGHTS RESERVED.Trademarks are owned or controlled by the Canadian Real Estate Association (CREA) and identify real estate professionals who are members of CREA (REALTOR®, REALTORS®) and/or the quality of services they provide (MLS®, Multiple Listing Service®)

Listing information last updated on June 21st, 2025 at 3:02pm MDT