

\$514,900 - 11443 37a Avenue, Edmonton

MLS® #E4444556

\$514,900

4 Bedroom, 2.00 Bathroom, 1,137 sqft
Single Family on 0.00 Acres

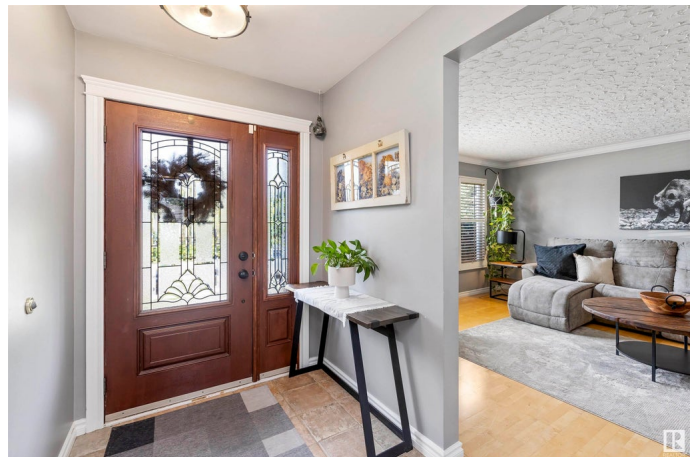
Greenfield, Edmonton, AB

This beautifully updated 4 bedroom, 2 bathroom bungalow offers incredible value in one of Edmonton's most sought after family communities. Thoughtfully renovated, the home features a stylish kitchen w/ custom maple cabinetry, ceramic tile flooring, modern appliances & a charming bay window overlooking the spacious backyard. The main floor boasts a living & dining area w/ gleaming hardwood floors—a perfect space for gatherings & everyday living. Downstairs, you'll find a basement w/ a cozy gas fireplace, spacious family room, laundry area, workshop & ample storage. The oversized double detached garage is a dream for hobbyists—insulated, drywalled, heated & equipped w/ 220V power. **UPDATES INCLUDE:** House Shingles 2016, Hot Water Tank 2017, Fence 2020, Furnace and A/C 2023. All of this in an unbeatable location near top-rated schools, parks, Southgate Mall, University of Alberta, transit & major roadways. This is the bungalow you've been waiting for!

Built in 1967

Essential Information

MLS® #	E4444556
Price	\$514,900
Bedrooms	4



Bathrooms	2.00
Full Baths	2
Square Footage	1,137
Acres	0.00
Year Built	1967
Type	Single Family
Sub-Type	Detached Single Family
Style	Bungalow
Status	Active

Community Information

Address	11443 37a Avenue
Area	Edmonton
Subdivision	Greenfield
City	Edmonton
County	ALBERTA
Province	AB
Postal Code	T5J 0J6

Amenities

Amenities	Closet Organizers, Patio, See Remarks
Parking	220 Volt Wiring, Double Garage Detached, Heated, Insulated, Over Sized

Interior

Appliances	Air Conditioning-Central, Dryer, Garage Control, Garage Opener, Microwave Hood Fan, Refrigerator, Storage Shed, Stove-Electric, Washer, Window Coverings
Heating	Forced Air-1, Natural Gas
Fireplace	Yes
Fireplaces	Mantel
Stories	2
Has Basement	Yes
Basement	Full, Finished

Exterior

Exterior	Wood, Stucco
Exterior Features	Back Lane, Fenced, Playground Nearby, Private Setting, Public Transportation, Schools, Shopping Nearby

Roof	Asphalt Shingles
Construction	Wood, Stucco
Foundation	Concrete Perimeter

Additional Information

Date Listed	June 26th, 2025
Days on Market	4
Zoning	Zone 16

DATA IS DEEMED RELIABLE BUT IS NOT GUARANTEED ACCURATE BY THE REALTORS® ASSOCIATION OF EDMONTON. COPYRIGHT 2025 BY THE REALTORS® ASSOCIATION OF EDMONTON. ALL RIGHTS RESERVED.Trademarks are owned or controlled by the Canadian Real Estate Association (CREA) and identify real estate professionals who are members of CREA (REALTOR®, REALTORS®) and/or the quality of services they provide (MLS®, Multiple Listing Service®)

Listing information last updated on June 30th, 2025 at 5:32am MDT