

\$569,000 - 3411 Parker Loop, Edmonton

MLS® #E4446864

\$569,000

3 Bedroom, 2.50 Bathroom, 1,956 sqft

Single Family on 0.00 Acres

Paisley, Edmonton, AB

Welcome to this well-maintained, modern 1,956 sq ft, 3 bed, 3 bath open-concept home by Homes by Avi! Situated on a 50 ft frontage non-zero lot, it features 9 ft ceilings on the main floor, engineered hardwood floors, triple-pane windows, and a stylish kitchen with white cabinetry, quartz island, stainless steel appliances including a brand new 2025 stove, coffee nook, and a walkthrough pantry/mudroom with main floor laundry. Oversized patio sliding glass doors lead to the custom deck and large SOUTH-facing backyard—perfect for summer living! Stay cool with the brand new 2025 A/C. Upstairs offers a vaulted-ceiling bonus room, a primary suite with walk-in closet, double sinks, and a relaxing soaker tub, plus two more spacious bedrooms. The basement offers a large footprint with 2 windows and a 3-pc bathroom rough-in—ready for your personal touch. Steps to the pond, walking trails, Paisley playground, and a 5-min walk to the dog park. Don't miss out!

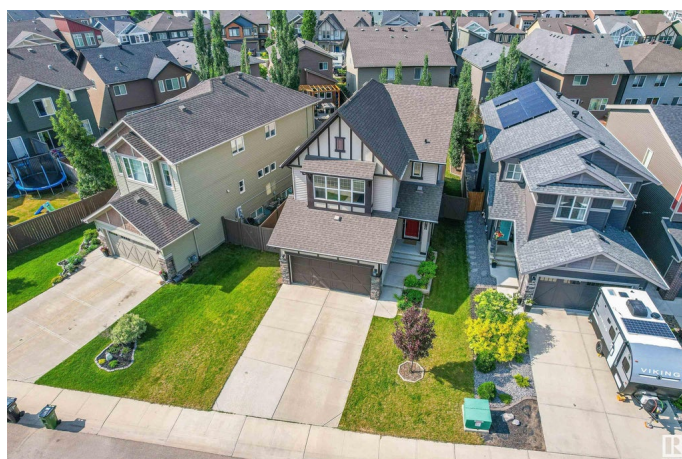
Built in 2015

Essential Information

MLS® # E4446864

Price \$569,000

Bedrooms 3



Bathrooms	2.50
Full Baths	2
Half Baths	1
Square Footage	1,956
Acres	0.00
Year Built	2015
Type	Single Family
Sub-Type	Detached Single Family
Style	2 Storey
Status	Active

Community Information

Address	3411 Parker Loop
Area	Edmonton
Subdivision	Paisley
City	Edmonton
County	ALBERTA
Province	AB
Postal Code	T6W 3A8

Amenities

Amenities	Air Conditioner, Ceiling 9 ft., Deck, Hot Water Electric, No Animal Home, No Smoking Home, See Remarks, HRV System
Parking	Double Garage Attached

Interior

Interior Features	ensuite bathroom
Appliances	Air Conditioning-Central, Dishwasher-Built-In, Dryer, Garage Opener, Microwave Hood Fan, Storage Shed, Stove-Electric, Washer, Window Coverings
Heating	Forced Air-1, Natural Gas
Stories	2
Has Basement	Yes
Basement	Full, Unfinished

Exterior

Exterior	Wood, Vinyl
Exterior Features	Airport Nearby, Fenced, Golf Nearby, Playground Nearby, Public Transportation, Schools, Shopping Nearby

Roof	Asphalt Shingles
Construction	Wood, Vinyl
Foundation	Concrete Perimeter

Additional Information

Date Listed	July 10th, 2025
Days on Market	13
Zoning	Zone 55

DATA IS DEEMED RELIABLE BUT IS NOT GUARANTEED ACCURATE BY THE REALTORS® ASSOCIATION OF EDMONTON. COPYRIGHT 2025 BY THE REALTORS® ASSOCIATION OF EDMONTON. ALL RIGHTS RESERVED.Trademarks are owned or controlled by the Canadian Real Estate Association (CREA) and identify real estate professionals who are members of CREA (REALTOR®, REALTORS®) and/or the quality of services they provide (MLS®, Multiple Listing Service®)

Listing information last updated on July 23rd, 2025 at 1:32pm MDT