

\$419,900 - 11211 72 Avenue, Edmonton

MLS® #E4446968

\$419,900

4 Bedroom, 2.00 Bathroom, 746 sqft

Single Family on 0.00 Acres

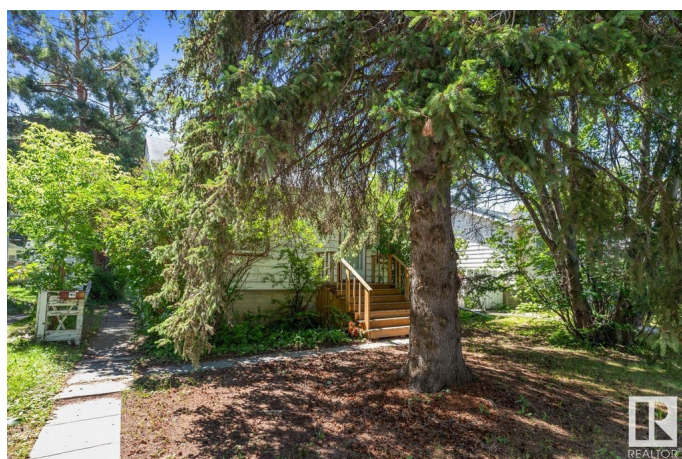
Parkallen (Edmonton), Edmonton, AB

Prime Location Near U of A! This charming 4 bedroom 2 bathroom bungalow offers a flexible layout perfect for families, students and investors. The main floor features a bright living space, two spacious bedrooms, and a functional kitchen. Downstairs includes two more bedrooms, a second full bathroom, an additional kitchen, and a large living area – ideal for extended family or shared living. Situated on a generous lot with a large yard and mature trees, there's plenty of space to relax or entertain. A solid double garage and unbeatable location just a short walk to the University of Alberta, Whyte Ave, and transit complete the package. Don't miss this opportunity in one of the city's most desirable neighborhoods!

Built in 1949

Essential Information

| | |
|----------------|-----------|
| MLS® # | E4446968 |
| Price | \$419,900 |
| Bedrooms | 4 |
| Bathrooms | 2.00 |
| Full Baths | 2 |
| Square Footage | 746 |
| Acres | 0.00 |
| Year Built | 1949 |



| | |
|----------|------------------------|
| Type | Single Family |
| Sub-Type | Detached Single Family |
| Style | Bungalow |
| Status | Active |

Community Information

| | |
|-------------|----------------------|
| Address | 11211 72 Avenue |
| Area | Edmonton |
| Subdivision | Parkallen (Edmonton) |
| City | Edmonton |
| County | ALBERTA |
| Province | AB |
| Postal Code | T6G 0B4 |

Amenities

| | |
|-----------|------------------------|
| Amenities | Detectors Smoke |
| Parking | Double Garage Detached |

Interior

| | |
|--------------|--|
| Appliances | Dryer, Refrigerator, Washer, Refrigerators-Two, Stoves-Two |
| Heating | Forced Air-1, Natural Gas |
| Stories | 2 |
| Has Basement | Yes |
| Basement | Full, Finished |

Exterior

| | |
|-------------------|--|
| Exterior | Wood, Vinyl |
| Exterior Features | Back Lane, Landscaped, Public Transportation, Schools, Shopping Nearby |
| Roof | Asphalt Shingles |
| Construction | Wood, Vinyl |
| Foundation | Concrete Perimeter |

Additional Information

| | |
|----------------|-----------------|
| Date Listed | July 10th, 2025 |
| Days on Market | 6 |
| Zoning | Zone 15 |

DATA IS DEEMED RELIABLE BUT IS NOT GUARANTEED ACCURATE BY THE REALTORS® ASSOCIATION OF EDMONTON. COPYRIGHT 2025 BY THE REALTORS® ASSOCIATION OF EDMONTON. ALL RIGHTS RESERVED. Trademarks are owned or controlled by the Canadian Real Estate Association (CREA) and identify real

estate professionals who are members of CREA (REALTOR®®, REALTORS®®) and/or the quality of services they provide (MLS®®, Multiple Listing Service®®)

Listing information last updated on July 16th, 2025 at 9:02pm MDT