

## \$409,900 - 2921 18a Avenue, Edmonton

---

MLS® #E4455563

**\$409,900**

3 Bedroom, 2.50 Bathroom, 1,416 sqft  
Single Family on 0.00 Acres

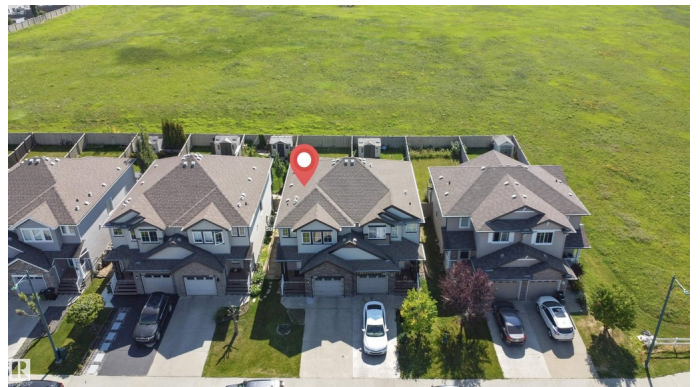
Laurel, Edmonton, AB

Perfect Family Home Backing Onto Green Space! This 1415 sq ft, 3 bed, 2.5 bath home is an ideal fit for young families, first-time buyers, or downsizers. The main floor features a bright, open-concept layout with an L-shaped kitchen, spacious dining area, and cozy living room filled with natural light. A convenient 2-piece bath and direct access to the deck and fully fenced yard make it perfect for everyday living and entertaining. Upstairs includes a versatile bonus room—great as a playroom, homework area, or second family space. The primary bedroom offers a walk-in closet and private 3-piece ensuite. Two additional bedrooms and a 4-piece main bath complete the upper level. Enjoy the peace and privacy of no rear neighbours and the added bonus of backing directly onto green space—ideal for kids, pets, or just relaxing views. Located close to schools, parks, shopping, and with quick access to the Anthony Henday, this is a family-friendly home in a fantastic location.

Built in 2011

### Essential Information

MLS® #	E4455563
Price	\$409,900
Bedrooms	3



Bathrooms	2.50
Full Baths	2
Half Baths	1
Square Footage	1,416
Acres	0.00
Year Built	2011
Type	Single Family
Sub-Type	Half Duplex
Style	2 Storey
Status	Active

### **Community Information**

Address	2921 18a Avenue
Area	Edmonton
Subdivision	Laurel
City	Edmonton
County	ALBERTA
Province	AB
Postal Code	T6T 0N8

### **Amenities**

Amenities	Deck, No Animal Home, No Smoking Home
Parking	Single Garage Attached

### **Interior**

Interior Features	ensuite bathroom
Appliances	Air Conditioning-Central, Dishwasher-Built-In, Dryer, Garage Control, Garage Opener, Microwave Hood Fan, Refrigerator, Stove-Gas, Garage Heater
Heating	Forced Air-1, Natural Gas
Stories	2
Has Basement	Yes
Basement	Full, Unfinished

### **Exterior**

Exterior	Wood, Stone, Vinyl
Exterior Features	Fenced, Landscaped, Park/Reserve, Playground Nearby, Schools
Roof	Asphalt Shingles
Construction	Wood, Stone, Vinyl

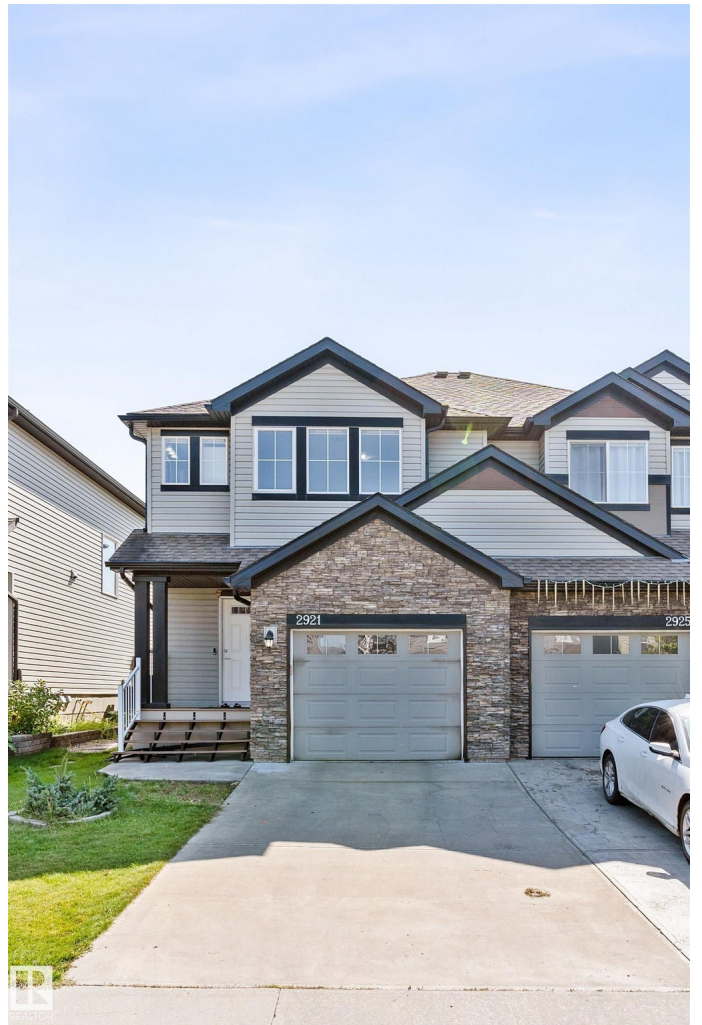
Foundation Concrete Perimeter

### Additional Information

Date Listed September 1st, 2025

Days on Market 42

Zoning Zone 30



DATA IS DEEMED RELIABLE BUT IS NOT GUARANTEED ACCURATE BY THE REALTORS® ASSOCIATION OF EDMONTON. COPYRIGHT 2025 BY THE REALTORS® ASSOCIATION OF EDMONTON. ALL RIGHTS RESERVED. Trademarks are owned or controlled by the Canadian Real Estate Association (CREA) and identify real estate professionals who are members of CREA (REALTOR®, REALTORS®) and/or the quality of services they provide (MLS®, Multiple Listing Service®)

Listing information last updated on October 13th, 2025 at 3:17am MDT