

\$525,000 - 21007 130 Avenue, Edmonton

MLS® #E4457452

\$525,000

4 Bedroom, 3.50 Bathroom, 1,443 sqft
Single Family on 0.00 Acres

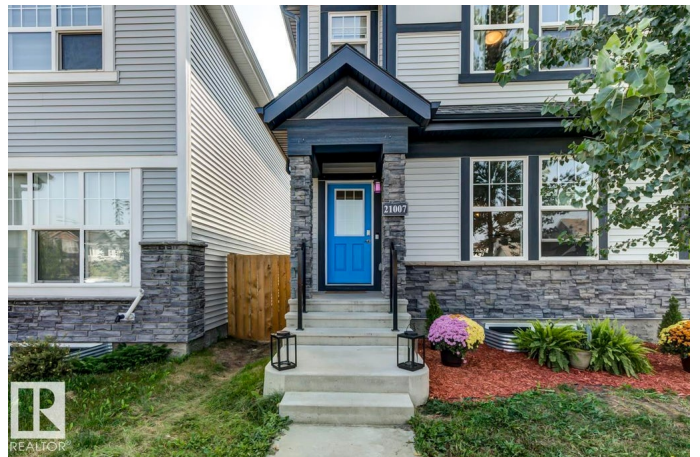
Trumpeter Area, Edmonton, AB

Just move right in it is all done for you. Enjoy this well maintained, well laid out completely developed home! The basement has just been developed and never used! With bright open floor plan on main and s/s appliances in kitchen there is plenty of counter space with granite counters. Head outside to brand new deck and walkway to your detached garage. Upstairs to the primary suite with 4 piece bath, walk in closet and room for king suite. You'll also find laundry and 2 more bedrooms and another 4 piece bath. The basement as mentioned is brand new with large 4th bedroom beautiful 4 piece bath with epoxy flooring and huge family room and plenty of storage. With solar panels, triple paneled windows, hot water on demand, HRV, EV plug-in in garage and a fully fenced yard this smart home is all yours! This home is close to Anthony Henday and St Albert. Welcome to that amazing family oriented neighbourhood of Trumpeter with park, walking trails and beautiful people.

Built in 2020

Essential Information

MLS® #	E4457452
Price	\$525,000
Bedrooms	4



Bathrooms	3.50
Full Baths	3
Half Baths	1
Square Footage	1,443
Acres	0.00
Year Built	2020
Type	Single Family
Sub-Type	Detached Single Family
Style	2 Storey
Status	Active

Community Information

Address	21007 130 Avenue
Area	Edmonton
Subdivision	Trumpeter Area
City	Edmonton
County	ALBERTA
Province	AB
Postal Code	T5S 0L4

Amenities

Amenities	Exterior Walls- 2"x6", Hot Water Tankless, HRV System, Solar Equipment
Parking Spaces	2
Parking	Double Garage Detached

Interior

Interior Features	ensuite bathroom
Appliances	Dishwasher - Energy Star, Dryer, Garage Control, Garage Opener, Refrigerator-Energy Star, Stove-Electric, Washer - Energy Star
Heating	Forced Air-1, Natural Gas
Stories	3
Has Basement	Yes
Basement	Full, Finished

Exterior

Exterior	Wood, Stone, Vinyl
Exterior Features	Back Lane, Fenced, Flat Site, Playground Nearby
Roof	Asphalt Shingles

Construction Wood, Stone, Vinyl
Foundation Concrete Perimeter

Additional Information

Date Listed September 11th, 2025
Days on Market 11
Zoning Zone 59

DATA IS DEEMED RELIABLE BUT IS NOT GUARANTEED ACCURATE BY THE REALTORS® ASSOCIATION OF EDMONTON. COPYRIGHT 2025 BY THE REALTORS® ASSOCIATION OF EDMONTON. ALL RIGHTS RESERVED. Trademarks are owned or controlled by the Canadian Real Estate Association (CREA) and identify real estate professionals who are members of CREA (REALTOR®, REALTORS®) and/or the quality of services they provide (MLS®, Multiple Listing Service®)

Listing information last updated on September 22nd, 2025 at 9:02am MDT