

Courtesy Of Peter Lukasiewicz Of Sterling Real Estate

\$700,000 - 642 Albany Way, Edmonton

MLS® #E4458368

\$700,000

6 Bedroom, 4.00 Bathroom, 2,508 sqft

Single Family on 0.00 Acres

Albany, Edmonton, AB

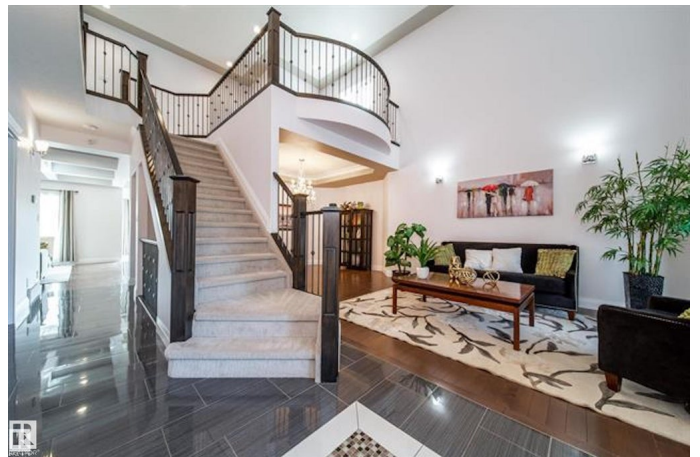
Beautiful home with a fantastic view of the environmental reserve/pond which is immediately behind it. SPACE galore. Two storey foyer opens to two storey living room with floor to ceiling windows, and formal dining area. Gorgeous central staircase and main floor bedroom or den with double doors, main floor laundry, main floor bathroom with tub/shower. Mudroom and access to the garage. The ROOMS WITH A VIEW along the back include the beautiful kitchen with island, walk in pantry, dinette area, and family room with built ins. Light abounds and the view is amazing. Upstairs enjoy the loft, Primary bedroom and luxury ensuite and a truly huge WALK THRU CLOSET. Two more bedrooms up with family bath. WALK OUT basement is fully finished with Rec room, bedroom with double doors and walk thru closet. bathroom, and a 6th bedroom /den. Huge windows abound throughout. Even the under stair storage is finished. Great backyard backs on pond/reserve. High end finishes. Entertain and grow your family!

Built in 2012

Essential Information

MLS® # E4458368

Price \$700,000



Bedrooms	6
Bathrooms	4.00
Full Baths	4
Square Footage	2,508
Acres	0.00
Year Built	2012
Type	Single Family
Sub-Type	Detached Single Family
Style	2 Storey
Status	Active

Community Information

Address	642 Albany Way
Area	Edmonton
Subdivision	Albany
City	Edmonton
County	ALBERTA
Province	AB
Postal Code	T6V 0H2

Amenities

Amenities	Deck, No Animal Home, No Smoking Home, Vaulted Ceiling, Vinyl Windows, Walkout Basement, See Remarks
Parking	Double Garage Attached
Is Waterfront	Yes

Interior

Interior Features	ensuite bathroom
Appliances	Dishwasher-Built-In, Dryer, Microwave Hood Fan, Refrigerator, Stove-Electric, Washer, Window Coverings
Heating	Forced Air-1, Natural Gas
Stories	3
Has Basement	Yes
Basement	Full, Finished

Exterior

Exterior	Wood, Stone, Stucco
Exterior Features	Airport Nearby, Backs Onto Lake, Environmental Reserve, Fenced, Golf Nearby, Landscaped, Low Maintenance Landscape, Picnic Area,

Playground Nearby, Public Swimming Pool, Public Transportation,
Schools, Shopping Nearby, Ski Hill Nearby

Roof Asphalt Shingles
Construction Wood, Stone, Stucco
Foundation Concrete Perimeter

Additional Information

Date Listed September 18th, 2025
Days on Market 23
Zoning Zone 27

DATA IS DEEMED RELIABLE BUT IS NOT GUARANTEED ACCURATE BY THE REALTORS® ASSOCIATION OF EDMONTON. COPYRIGHT 2025 BY THE REALTORS® ASSOCIATION OF EDMONTON. ALL RIGHTS RESERVED. Trademarks are owned or controlled by the Canadian Real Estate Association (CREA) and identify real estate professionals who are members of CREA (REALTOR®, REALTORS®) and/or the quality of services they provide (MLS®, Multiple Listing Service®)

Listing information last updated on October 11th, 2025 at 2:02am MDT