

\$324,900 - 4018 115 Avenue, Edmonton

MLS® #E4459451

\$324,900

3 Bedroom, 1.50 Bathroom, 1,227 sqft

Single Family on 0.00 Acres

Beverly Heights, Edmonton, AB

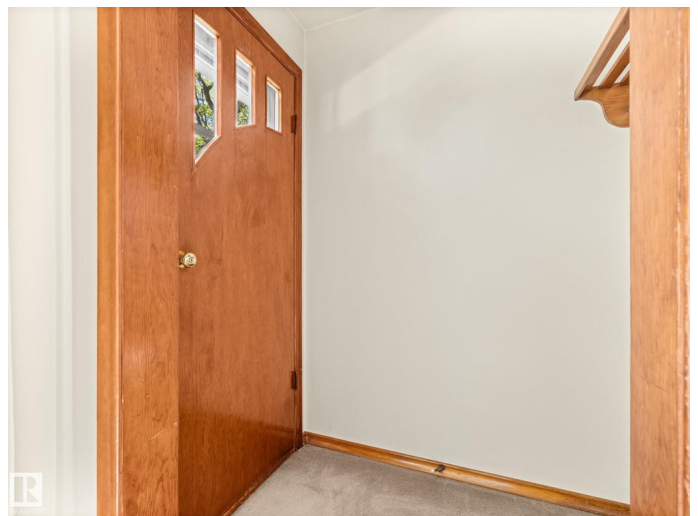
Are you looking for a great VALUE single-family detached home on a quiet street? WELCOME to this BRIGHT 1226sqft bungalow in the heart of Beverly near new infill homes & renovated properties. Make your way through the front door, and you are greeted by natural light pouring in through the windows. With mid-century touches, you can restore that feel, or turn it into something entirely new that suits your personality and needs. Three good size bedrooms are on the main floor, perfect for your family. You also have a four piece bathroom, a large living room, and spacious kitchen that looks out upon your BIG BACKYARD with large garden! Downstairs, you will find a partially finished basement awaiting your finishing touches. Upgrades would include a NEW SEWER LINE done 15 years ago, HWT 2018, furnace 2020. Close to the River Valley an easy access to transportation, this home is a great investment property, or perfect for someone looking to own their own detached home without breaking the bank. Don't miss out!

Built in 1958

Essential Information

MLS® # E4459451

Price \$324,900



Bedrooms	3
Bathrooms	1.50
Full Baths	1
Half Baths	1
Square Footage	1,227
Acres	0.00
Year Built	1958
Type	Single Family
Sub-Type	Detached Single Family
Style	Bungalow
Status	Active

Community Information

Address	4018 115 Avenue
Area	Edmonton
Subdivision	Beverly Heights
City	Edmonton
County	ALBERTA
Province	AB
Postal Code	T5W 0V4

Amenities

Amenities	On Street Parking, Deck
Parking	No Garage

Interior

Appliances	Dishwasher-Built-In, Dryer, Freezer, Oven-Built-In, Refrigerator, Stove-Electric, Washer
Heating	Forced Air-1, Natural Gas
Stories	1
Has Basement	Yes
Basement	Full, Partially Finished

Exterior

Exterior	Wood, Brick, Stucco
Exterior Features	Back Lane, Golf Nearby, Playground Nearby, Public Transportation, Schools, Shopping Nearby, Ski Hill Nearby
Roof	Asphalt Shingles
Construction	Wood, Brick, Stucco

Foundation Concrete Perimeter

Additional Information

Date Listed September 25th, 2025

Days on Market 4

Zoning Zone 23

DATA IS DEEMED RELIABLE BUT IS NOT GUARANTEED ACCURATE BY THE REALTORS® ASSOCIATION OF EDMONTON. COPYRIGHT 2025 BY THE REALTORS® ASSOCIATION OF EDMONTON. ALL RIGHTS RESERVED.Trademarks are owned or controlled by the Canadian Real Estate Association (CREA) and identify real estate professionals who are members of CREA (REALTOR®, REALTORS®) and/or the quality of services they provide (MLS®, Multiple Listing Service®)

Listing information last updated on September 29th, 2025 at 8:02pm MDT